

2014 Annual Report



“The seeds of today, are the trees of tomorrow.”

- Anonymous

Our Mission

To stimulate philanthropy and enhance the quality of life in the community through accumulating, managing and disbursing financial assets, and to serve as a catalyst and neutral convener to meet a wide range of community needs in the South Central Pennsylvania counties of Cumberland, Dauphin, Franklin, Lebanon, and Perry, and the Dillsburg Area.



Our Philosophy

- Stimulate innovative projects and programs and encourage collaborative approaches that address emerging or unmet needs
- Promote solutions that confront the causes of problems, with special emphasis on empowering the disadvantaged and the underserved
- Reflect the diversity of our community in TFEC's planning, decision-making and grantmaking
- Respect individual concerns of citizens while striving for community solutions

Table of Contents

Letter from the President and Chairman	3-4
Dream	
Start Your Charitable Journey.....	5-6
Women's Fund.....	7-8
Create	
Scholarships	9-10
Educational Improvement Tax Credit Program	11
Emerging Philanthropist Program.....	12
Nonprofit Organization Capacity Building.....	13
Health Literacy.....	14
Sustain	
Planned Giving	15-16
Parents & Partners	17-18
2014 Grants by Program Area and Fund Type	19-20
Regional Foundations.....	21-32
Greater Harrisburg Foundation (1920)	21-22
Mechanicsburg Area Foundation (1986).....	23-24
Franklin County Foundation (1987)	25-26
Perry County Community Foundation (1987)	27-28
Camp Hill Community Foundation (1996).....	29-30
Dillsburg Area Foundation (2004)	31-32
2014 Champion of Philanthropy	33-34
Statement of Financial Position	35
Historical Investment Performance.....	36
Investment and Assets Information	37-38
New Funds	39-40
New Projects	41-42
Management Service Agreements	43
2015 Board of Directors and Standing Committees	44-45
2015 TFEC Staff and Consultants.....	46

Letter from the President and Chairman

“We ended the year with a total of 36 new funds, management agreements and projects.”



“Our total contributions for the year reached \$5.3 million, which brought our total assets to \$75 million.”

We are pleased to present to you our Annual Report for 2014. We sincerely thank each and every one of you for your generous support of the region through The Foundation for Enhancing Communities (TFEC) throughout this past year. We are your partner in your charitable giving and, as such, we thank you for the opportunity to make it easier to connect you to the causes you care about and to make things a little easier for you through the use of our services.

The Foundation for Enhancing Communities and our six regional foundations, which include Camp Hill Community Foundation, Dillsburg Area Foundation, Franklin County Foundation, Greater Harrisburg Foundation, Mechanicsburg Area Foundation, and Perry County Community Foundation, had another very successful year. We ended the year with a total of 36 new funds, management agreements and projects. Our total contributions for the year reached \$5.3 million, which brought our total assets to \$75 million.

We appreciate and thank the volunteer members of the Investment Advisory Committee, chaired by Bob Dolan of Conrad Siegel Actuaries, for their diligent work in managing the assets of TFEC. Bob Dolan reports: *The past year has been a good year for investors in the U.S., the Dow Jones Index Fund was up by almost 10% for the year and the S&P 500 Index Fund was up more than 13%. The bond market remains strong, as interest rates of all durations remain at historically low levels. The*

international equity markets and domestic small caps have not fared as well, you can see the net effect in our Model E investment results on page 36 of the Annual Report.

With all that considered, our disciplined approach to passive investing has served us well. We continue to rebalance as cash becomes available, which has the effect of continuing to “buy low and sell high” as we keep our assets properly diversified. We have maintained our philosophy! During the year, we sold our entire stake in PIMCO in steps as a result of the management turmoil there. We have redeployed those assets into high quality, intermediate term bonds, in keeping with our fixed income strategy.

In 2014, we were excited to kick-off the inaugural year of our newest program, the Emerging Philanthropist Program (EPP) which is a partnership with Harrisburg Young Professionals (HYP). The inaugural class had 12 individuals who were chosen by the HYP team from a pool of applicants of their members. We met 10 times during the year and involved the class in sessions about philanthropy. They learned about the strengths and weaknesses of the various sectors of our region, including the arts, health and human services, environment, education, and community development. The class then decided on an area they wished to fund with the \$5,000 given to them by TFEC to make a grant. They wrote a Request for Proposal in the area of early childhood education and parent engagement. They received nine

proposals. They made three site visits and then chose Samara, a nonprofit organization that specializes in strengthening families. Samara works with parents who experienced trauma and loss in their own childhoods and assists them to move beyond their own hurt and raise their children in a positive environment. It was a wonderful process to experience and when the class had their official graduation, they all said they wished it was not over. Therefore, we are keeping them involved with the 2015 class that began in late February. They also agreed to establish an endowment fund called the Emerging Philanthropists Fund to grow an endowment for the work of the group. We are all very happy about the success of the program and pleased to have this opportunity to work with young adults.

Our Women’s Fund has been particularly active and successful this year. We offered four events: the Annual Grantee Recognition Breakfast in March, a Wine and Cheese Event in May and November for potential Dream Team members, and the Power of the Purse in October. All the events were sold out and yielded the fund much growth in overall assets. Dr. Carolyn C. Dumaresq served as our Chair in 2014. Her leadership and enthusiasm assisted the group to grow beyond its expectations.

Our 2014 Champion of Philanthropy event was held in May. Connie Siegel, the former Chair of TFEC’s Board of Directors and former Chair of the Investment Advisory Committee, was chosen as the honoree. The event was held at the

Whitaker Center for Science and the Arts and was very successful with over 250 people in attendance. Our region is better for all the support he has provided to countless nonprofit organizations both in leadership and in contributions of resources. Congratulations, Connie!

We welcomed Barbara Darkes of McNees Wallace & Nurick, Glenn Heisey of Capital BlueCross, and Dolly Lalvani of PriceWaterhouseCoopers as new members of the Board of Directors in 2015. Leaving the Board this year, after six years of service, were David Kleppinger of McNees Wallace & Nurick (former TFEC Board Chair), Kenneth E. Lehman, retired Volvo dealer, and David Skerpon of Capital BlueCross. Our staff consists of a strong, cohesive team of professionals whose contributions are most critical in meeting the strategic goals and objectives of an ever-growing, ever-adapting organization. Ginny Bush, our Executive Assistant, retired after 13 years with TFEC. We thank her for her service and wish her well. We welcomed Chera Yankowski as our new Executive Assistant, as well as Leslie Fick as our Program Manager for Parents & Partners. We sincerely thank Spencer G. Nauman, Jr., Esq. of the firm Nauman, Smith, Shissler & Hall LLP, for his exceptional legal advice and Connie Siegel of Conrad Siegel Actuaries for his guidance and leadership.

Our great success year after year is directly because of you, our donors and professional advisors. Without your involvement and commitment, we could not affect positive change

in our community. We gratefully thank you for your dedication and commitment to making the region a better place to live, work and play. We look to you for suggestions and for your interest in and attention to our philanthropic services. You continue to represent the seeds that were sowed years before that are presenting themselves now in the form of estates, bequests and new funds. As always, we ask you to assist TFEC to continue the task of sowing the seeds of today that will be harvested tomorrow, guaranteeing our legacy of service and relevance to the community in the future.

If you have questions or would like additional information about any of our services, please contact Janice R. Black, President and CEO at jblack@tfec.org, or at 717.236.5040. Visit our website at www.tfec.org for regular updates on general information about TFEC, grants, scholarships, our electronic newsletters, events, and more!

Remember to consider giving a Charitable Gift Certificate to your friends and loved ones for special events in their lives.

Sincerely,

Janice R. Black
President and CEO

David A. Schankweiler
Chairman

Start Your Charitable Journey

We can help you achieve your philanthropic goals

Since 1920, TFEC has been partnering with you to establish your charitable funds. TFEC dreams with you and creates opportunities for you to achieve your charitable goals. We are your community foundation and we will be here to sustain your charitable goals forever.

Ways to Give

You can choose to give cash to establish a fund or contribute to an existing fund; however, there may be significant tax advantages to contributing other types of assets such as:

- Marketable securities
- Closely held business stock
- Real estate
- Life insurance policies
- Mutual fund shares
- Nontraditional assets such as collections, art and antiques

- Qualified retirement plan assets such as IRA, 401(k), 403(b), or pensions

If you have any questions about our services or would like more information, please contact Janice R. Black, President and CEO, at jblack@tfec.org or Jennifer Doyle, Director of Development & Community Investment, at jdoyle@tfec.org. You can also visit our website, www.tfec.org, or call us, 717.236.5040, for information about how we can help you achieve your philanthropic goals.



“When we first considered creating a sculpture center, the task seemed daunting. The support and expertise that we have found working with TFEC gave us the confidence, assurance and assistance needed to embark on our studio project.”

- Seward Ryan and Debra Thomas
Form Foundation Fund
Donor Advised Fund

“We established the McLemore Family Fund at the Camp Hill Community Foundation because it gave us flexibility and ease to conduct our charitable giving, while supporting the local community foundation. The fund establishment process has met all of our expectations, it has streamlined our giving, and we are grateful to have this opportunity to be a part of the Camp Hill Community Foundation family.”

- Barbara and Burke McLemore
McLemore Family Fund
Donor Advised Fund



1 - The donor recommends grant recipients, amounts and a disbursement schedule; the fund may be PERMANENT or NONPERMANENT

2 - Grants in the form of scholarships; either the donor, committee or TFEC can manage the student selection process; the fund may be PERMANENT or NONPERMANENT

3 - The donor designates one or several nonprofit organizations as permanent grant recipients

4 - Ensures that grants will be available, in perpetuity, for the most current community needs. Grants awarded from these funds respond directly to community needs as defined by a grant committee from the following

types of funds: Area of Interest (grants designated to one area of charitable interest by the donor, such as the arts, health and human services, education, etc.) and Unrestricted Funds (a fund that is not specifically designated to a particular use by the donor and is used as community needs change)

Women's Fund

Invest in Women . . . Change the Future



Overview

Established in 2000, the Women's Fund promotes awareness of issues affecting women and girls through the power of collective philanthropy. The Women's Fund is part of a nationwide movement, allowing women to fulfill their desire to give back.

Objectives of the Women's Fund:

- Educate others about philanthropy and issues affecting women and girls
- Raise money and award grants that address issues affecting women and girls
- Promote inclusiveness and cultural competency in giving and grantmaking
- Empower all women to recognize themselves as philanthropists

For more information about the Women's Fund, please visit www.tfec.org/Womens-Fund.

Women in Philanthropy

In 2014, we bestowed special recognition to two award winners: Ashley Company and Tracey C. Jones. Each was honored for their many years of providing time, talent and treasure to causes supporting women and girls in our community. They are exceptional role models and amazing women!

A Women in Philanthropy awardee must be nominated by her peers as an individual who has made outstanding contributions to local nonprofit organizations. All nominations are reviewed by the Women in Philanthropy Committee and selected based on each woman's contributions towards creating positive change in the lives of women and girls in Cumberland, Dauphin, Franklin, Lebanon, and Perry counties, and the Dillsburg Area. Eleven women, including Ashley and Tracey, have received this award since its inception in 2011.

2015 Executive Committee

The Women's Fund is led by a dedicated group of women:

- Dr. Carolyn C. Dumaresq, Chair
- Renee Custer
- Norma Gotwalt
- Julia Mallory
- Gloria Merrick
- Ho-Thanh Nguyen
- Elaine Nissley
- Shileste Overton-Morris
- Jessica Ritchie
- Dr. Michele Sellitto
- Karen F. Snider

There are four volunteer subcommittees that also work to achieve the goals and objectives of the Women's Fund: Development, Grantmaking, Marketing & PR, and Women in Philanthropy. Janice R. Black and Jennifer Doyle are staff liaisons to the Executive Committee.

Dream Team

Over 75 individuals have joined the Dream Team since its founding in 2011. You can become a member of the Dream Team with a gift or pledge of at least \$1,000 to the Women's Fund. Please visit www.tfec.org for a complete list of Dream Team members.

\$16.66

For only **\$16.66 per month**, over 5 years, you can give the gift of hope to women and girls in our community.



"This past year was another great year for the Women's Fund, a special initiative of The Foundation for Enhancing Communities, with 18 new pledges joining the ranks of our Dream Team members in 2014. The pledges and the proceeds from our Annual Grantee Recognition Breakfast and our Power of the Purse events allowed us to help 12 local nonprofit organizations serve the needs of women and girls in the South Central Pennsylvania counties of Cumberland, Dauphin, Franklin, Lebanon, and Perry, and the Dillsburg Area. Please join us at one of our fundraising events in 2015 so we can continue our work!"

- Dr. Carolyn C. Dumaresq, Chair

Neighborhood Center of the United Methodist Church

In 2014, we awarded the Neighborhood Center of the United Methodist Church a \$2,000 grant for Young Mothers Together, a program for pregnant and parenting teen girls. This free and comprehensive program offers one-to-one counseling, and monthly educational and support meetings. These meetings include topics such as nutrition, immunization, infant care and life skills. Young Mothers Together enhances teen parent confidence and competence, and offers strategies to help the transition to adulthood. The program helps teen mothers complete their education, navigate the network of assistance agencies, and care for their children.



"I believe that if it wasn't for Young Mothers Together, I would not be finishing my last year of high school and graduating with honors."

- Maria, Program Participant



Scholarships

You can help students access higher education

There are several types of scholarship funds that you can establish: permanent, nonpermanent, restricted or committee advised.

Scholarships can benefit students at the high school or college level. You determine the criteria for your scholarship such as financial need, class rank, GPA, leadership, etc. You can select scholarship awardees with the assistance of a committee using objective criteria. TFEC can assist you in managing

part or all of the application process. TFEC administers the award process and payment of all awards each semester. Scholarships may only be used towards the cost of tuition, fees and/or books. For more information about scholarships, please visit www.tfec.org/scholarships.

<p>Current Total Scholarship Funds</p> <p>120+</p> <p>TFEC currently manages or administers over 120 scholarship funds that are available to students. These funds relieve some of the financial burden that higher education can place on a student and their family.</p>	<p>Total Student Award Recipients</p> <p>415</p> <p>A total of 415 students received scholarships for the 2014-2015 academic year through the various scholarship funds that are managed or administered by TFEC.</p>	<p>Total Scholarships Awarded</p> <p>\$1.1m</p> <p>Over \$1.1 million in scholarships were awarded to students for the 2014/2015 academic year from scholarship funds and management service agreements held or administered by TFEC.</p>
<p>Partnership for Access to Higher Education</p> <p>1 of 37</p> <p>TFEC is one of 37 partners with the AES/PHEAA Partnership for Access to Higher Education (PATH) Program. TFEC scholarship recipients are eligible to have their awards matched provided they attend a school in PA and have a PA grant.</p>	<p>PATH Program Matching Funds</p> <p>\$150k</p> <p>TFEC received \$150,000 in matching funds for the 2014-2015 academic year from the PATH Program. These funds further help lower the costs of higher education for students and families in need.</p>	<p>PATH Program Match Amounts</p> <p>\$2,500</p> <p>Scholarship recipients are eligible to have their awards matched up to \$2,500 per year through the PATH Program. Scholarship recipient information is submitted to PHEAA by TFEC staff requiring no additional work from the scholarship recipient.</p>

New Scholarship Funds Established in 2014

- Linda T. Butler Scholarship Fund:** This scholarship was established by Linda T. Butler, a devoted educator and former resident of Susquehanna Township. Annually, a scholarship will be awarded to a graduating senior from Susquehanna Township High School that has not received any other monetary scholarships or awards, has demonstrated academic growth through their high school career, and shows evidence of strong character and school pride.
- Jerry Bennett Memorial Scholarship Fund:** This scholarship was created in memory of Jerry to benefit students at James Buchanan High School.
- Benjamin Pash Bloser Memorial Scholarship Fund:** This scholarship was created in memory of Ben, who died at age 21, and will be awarded to a Big Spring High School student who demonstrates similar characteristics of Ben who was athletic, valued sportsmanship, and was kindhearted.
- Louise A. Dixon Memorial Scholarship Fund:** This scholarship was created in memory of Louise A. Dixon by her family. There was no stronger advocate of advanced learning than Louise and it was her utmost desire to see the scholarships awarded to high school seniors who might not otherwise have an opportunity to attend college.
- Mabel M. Witmer Scholarship Fund:** This scholarship was created to assist students in obtaining training beyond the high school level at a trade or technical school.

Zachary Moore Music Memorial Scholarship Fund

This scholarship is intended to support music development as envisioned by Zachary's parents. Zachary wanted to pursue a non-traditional, innovative, and creative approach to bring forth music and help release the music he heard in his mind, body and soul.



"We established this memorial scholarship fund to keep Zach's spirit and love of music alive."

- Reizdan and Rosemary, Zachary's Parents

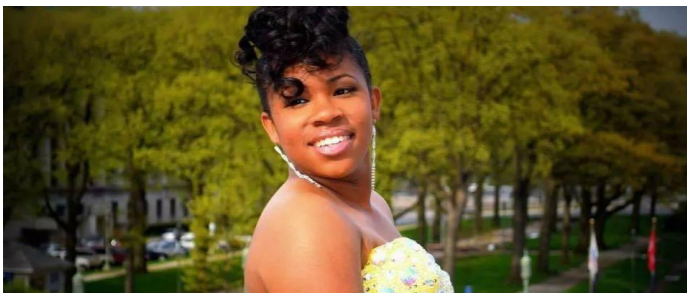


Educational Improvement Tax Credit Program

The Educational Improvement Tax Credit (EITC) Program provides credits to eligible businesses contributing to one of the following specific programs: a Scholarship Organization, an Educational Improvement Organization, and/or a Pre-Kindergarten Scholarship Organization. TFEC is currently eligible to receive funds for the Opportunity Scholarship Tax Credit (OSTC) Program and the Pre-Kindergarten Educational Improvement Tax Credit (EITC) Program.

Opportunity Scholarship Tax Credits

OSTC funds allow TFEC to provide tuition to eligible students who reside within the attendance boundary of a low achieving school to attend a participating nonprofit school or a participating private school located in a school district outside of the recipients school district of residence including special education schools. Tuition to be paid will include school related fees charged by a school. TFEC will provide tuition to students in the counties of Cumberland, Dauphin, Franklin, Lebanon, Northern York and Perry. Eligible students are grades K-12 who have financial need. Families apply for funds through an application process managed by TFEC staff.



"This scholarship allowed me to attend Bishop McDevitt by giving the financial help that my family needed. It allowed me to go from a failing school district to a school where I would receive an education that would benefit me later in life. I am truly grateful that I received this scholarship."

- Zabria Everett
OSTC Scholarship Recipient

Pre-K Educational Improvement Tax Credits

Pre-K funds allow TFEC to provide tuition to eligible Pre-K students to attend a Pre-K program operated by, or in connection with, a school or a special education school in the counties of Cumberland, Dauphin, Franklin, Lebanon, Northern York and Perry. Pre-K programs must have a curriculum that is aligned with the associated school. Eligible students are ages 3-4 years, living in and attending a Pre-K program, who have financial need. Families apply for funds through an application process managed by TFEC staff. For more information about both tax credit opportunities, please visit www.tfec.org/eitc.



"We're a local business which means our success wouldn't be possible without the support we've received from the local community. Through this donation, we're proud to be giving back to our local community foundation that is dedicated to enhancing the quality of life in the region we serve."

- Stephanie and Christian Rawden
McDonald's, EITC Donor Company

Emerging Philanthropist Program Engaging Harrisburg's next generation of philanthropists

a partnership between

the Foundation
for Enhancing Communities

HARRISBURG
YOUNG PROFESSIONALS



Program Overview:

The Emerging Philanthropist Program (EPP), a partnership between TFEC and Harrisburg Young Professionals, seeks to engage Harrisburg's rising business and community leaders with the great possibilities that lie within philanthropic endeavors in Harrisburg and answer three questions:

1. What does it mean to be philanthropic?
2. How do I understand the needs of our community?
3. What can I do to make an impact?

EPP provides resources and educational opportunities for Harrisburg's developing leaders who wish to be actively engaged in giving back to their community.

Topics Covered:

The following topics were discussed during the 10-month program:

- Personal philanthropy
- Fundraising 101
- Grantmaking 101
- Wealth management practices
- Giving back to your community

The culminating experience was for the class to apply their newly learned community and grantmaking skills by awarding a grant to a nonprofit organization in the Harrisburg area that provided programs and services that address family development and engagement; a topic chosen by the class after assessing community needs. After a competitive grantmaking process the class awarded Samara a \$5,000 grant.

2014 EPP Class:

The inaugural EPP class consisted of 12 members of the Harrisburg Young Professionals:

- Catherine Azeles
- Kimberly Bowman
- Ayanna Cash-Clements
- Toan Do
- James Hobbs
- Alexander Langan
- Jolene Leisure
- Steven Martinez
- Suzanne Patackis
- Adrienne Thoman
- Melba Twitty
- David Wagner

For more information about EPP, please visit www.tfec.org/epp.

\$5,000

Grant amount awarded to Samara for their Intensive Parenting Program.

The Intensive Parenting Program creates an environment of emotional safety and warmth that allows parents to reflect on their own experiences and open themselves to new ideas and unfamiliar concepts through activities that promote trust within the group and self-discovery. For more information about Samara, please visit page 22.

Nonprofit Organization Capacity Building

Partners with nonprofits to serve our community

TFEC provides ongoing technical assistance to nonprofit organizations and practical training on best practices, funding trends, emerging outcomes and evaluation methods to ensure the sustainability and competitiveness of nonprofits in a challenging economic environment.

An Agency Fund is an endowment fund established by a nonprofit organization with the income benefiting their programs in perpetuity. The process of building a successful Agency Fund requires commitment over many years from the entire nonprofit organization with a steadfast dedication to the principle of investing for the future. Income earned from the fund can be reinvested for compound growth or can provide a predictable income stream. Fund income lessens the pressure to raise current operating dollars and helps to smooth the ups and downs of economic business cycles. Additionally, an Agency Fund sends a positive message to donors: the organization has

achieved a key measure of financial stability and intends to carry out its mission for generations to come.

In 2014, TFEC and Temple University's NEST covered these sessions through the Enhancing Communities Learning Series: collaboration, networking, strategic planning and fundraising. Due to the success of this program we are continuing the collaboration into 2015. Our nonprofit participants have identified the following topics of interest: communications, grantwriting, volunteer management, networking and social media best practices. For more information about ECLS, please visit www.tfec.org/ecls.

“The ambitious goal of changing a social norm to include respect and nonviolence is key to our work in primary prevention. To meet this goal we invested funds to support this work in the future. We approached TFEC because we know that they are trusted and respected in this field. TFEC shares our mission and vision and will lead us as we build our sustainability for the future.”

- Jenny Murphy-Shifflet, President/CEO
Sexual Assault Resource and Counseling Center
Agency Fund



“The ECLS series has addressed common issues pertinent to nonprofits. Rather than developing a club of people who get together every few months, the sessions have appealed to a variety of specialties in such a way as to recognize that capacity building is a shared responsibility. While sessions do not create expertise, they begin a conversation and demonstrate that the issues are held in common by other nonprofits.”

- Stephen Scanlon
ECLS Participant



Health Literacy

Health disparities among the aging population

We are proud to facilitate community conversations and seek solutions to problems. Our experiences as a neutral convener enable us to bring together nonprofit organizations, government officials, corporations and foundations to define issues and generate solutions.

In 2012, TFEC convened community stakeholders to discuss health disparities among the aging population. Participants included local area agencies on aging, hospital systems, health insurers, service providers, and more. After much discussion, health literacy was chosen as the most pressing issue affecting older citizens. The Aging Task Force continued this effort throughout 2014 completing significant work to create and implement an online health literacy toolkit for use by community organizations serving older persons. This toolkit is an active resource that can be updated as needed.

Low health literacy occurs when there is a gap between the knowledge and skills of the patient and the demands of today's healthcare system. There are tools you can use to help close that gap.

We invite caregivers, church groups, public libraries, senior centers, and any other person or organization working with older adults to take a look at the resources we've gathered. Your relationship with the people you work with can be a great tool to closing the health literacy gap among the aging population.

The toolkit can be found online by visiting www.tfec.org/health-literacy.

Seven Areas of Focus



Health Literacy Basics



Communicating with Health Professionals



Medication Safety



Finding Reliable Health Information



Health Insurance Literacy



Teach-back



Measuring Success

Current Participants

Bob Haigh, Chair
Sandy Abnett
Terry Barley
Dara Bourassa
Gil Brown
Julia Bucher
Jill Buhrman
Jonelle Prether Darr

Annamarie Fazzolari
Cindy Hipszer
Helen Houpt
Jim Ingolio
Sharon Kelly
Rebecca May-Cole
Martha McGraw
Gloria Merrick

Dee Miller
Becca Raley
Lori Clark Robinson
Gary Scicchitano
Katie Shradley
Barbara Terry
Susan Wokulich
Jennifer Kuntch, TFEC Staff Liaison

Planned Giving

Achieve your charitable goals with a future gift

In addition to accepting direct contributions, TFEC assists you in making planned gifts. Often these gifts are deferred based upon your personal estate planning and income needs. Even though gifts might be deferred, they could have immediate tax benefits. Deferred gifts include bequests, charitable remainder trusts, charitable annuity remainder trusts, charitable lead trusts, and real estate with retained life interest. If you make a planned gift, you are invited to become a member of our 1920 Legacy Society. Members of the 1920 Legacy Society receive special recognition in our Annual Report and on our website, invitations to all TFEC events, and a special gift to say thank you for your planned gift.

1920 Legacy Society

Lydia Auchincloss*
Sloan & Susan Auchincloss
William Banks
Janice R. Black
Harold & Dolores Brake
Evan R. & Marguerite H.* Bostdorf
Dr. Maury Brenner
Dr. David Bronstein
Janet * & Melvin Brownold
A. Wesley Carr, Jr.
Marie Graupner Elias*
Dr. Donald Freedman
David E. & Jane Edgar Freet
Gordon Fry
Mary Fox
Edward* & Alice Girvin
Joseph K.* & Joan S.* Goldsmith
Norma Gotwalt
Raymond L. & Frieda Gover
James E. Grandon, Jr.
Lois Lehrman Grass
Robert D. Hanson*
Glenn & Barbara Holliman
Martha Hostetter
Robert Hostetter
Kenneth S. Knowlton
Margaret D. Kooistra
Eric Krell
John* and Julia* Krell
Gov. George* & Mary Jane* Leader
Jan & Rick Le Blanc
Emily H. Lehr*

William Lehr, Jr. & Beverlee Lehr
Robert Thomas Leonard
Barbara Lock
Leon I. Lock*
Carrie & George Lyter, Jr.
Frank Magee
Jerry Martin & Michael Knaub
L. Jeffrey & Sharon L. Mattern
Margaret B. Masters*
James M. & Janet M. Maynard
Harold A.B. McInnes
Carol Mentz
Linda Miller & Robert Adelberg
Wayne & Susan Mountz
Senator Harold* and Phyllis Mowery
Sidney & Ellen Palmer
Charles Peter
Harry W.* & Nancy Reist Preis
Leona Rapoport*
David & Jeanne Reager
Neal & Linda Rhoads
Helga Rist
Diane L. Sandquist
Charles G. Schlichter, Jr.
William & Susannah Rothman
Paul V. Shaver & Patricia Roussel
Walter W. Shearer*
Conrad M. & Gail Siegel
R.E. & S. Singiser
Mr. & Mrs. Stephen F. Spector
Edward Solomon*

Jennifer Steigelman
Dean & Gail Stephens
Mary Alice & Larry W. Stoops
Elsie W. Swenson*
J. Wayne Tisdale*
Marilyn Lee Urie
Gale Wenk du Pont
Milton Weber*
Bernice Weir*
Wallace & Lois Willig
Simon Zimmerman*
Robert G. & Linda M. Zullinger

*Deceased



"We believe that it is important for those who are blessed to take and create an opportunity to give back to their community and to help with the social well-being for future generations. After considerable thought and research we chose TFEC as the best way to accomplish our objectives after our lifetime. We believe that TFEC has the ability and commitment to administer our estate, grow the principal, and fulfill our wishes so that we will have the peace of mind of knowing that our commitments will be honored for perpetuity."

- Sidney and Ellen Palmer

Split Interest or Charitable Trusts



William and Nancy Law



TFEC manages and serves as trustee for 41 charitable trusts, valued at \$10.4 million (12/31/14). These trusts include Charitable Remainder Unitrusts, Charitable Remainder Annuity Trusts, and Charitable Lead Trusts. These agreements are legal arrangements where you can transfer assets irrevocably to a Trust, which then invests it and creates two (split) interests. Typically, a donor establishes these planned gifts in order to increase the impact of their charitable gifts, receive a lifetime income, and/or qualify for income, gift and estate tax benefits. Charitable trusts have a minimum \$50,000.00 contribution requirement. In most circumstances, legal services are required and are available to donors without charge through TFEC's relationship with Nauman, Smith, Shissler & Hall LLP.

William and Nancy Law recently celebrated their golden anniversary of 50 years. After marrying in 1965, the North Carolina natives moved around the country, living in Florida, South Carolina and, most recently, Pennsylvania. They returned to North Carolina at the end of 2014 to reacquaint themselves with the "Old North State." When they aren't traveling, the couple finds plenty of ways to fill their time. William is an avid tennis player who enjoys participating in mission trips with his church. Nancy is more of a homebody who likes to read and work on her needlepoint. These hobbies have been the foundation of the Laws' happy marriage.

William and Nancy have also both realized the importance of giving back to their community. Therefore, William and Nancy established a Charitable Remainder Trust in 2014 with TFEC. Upon establishing their Charitable Remainder Trust, they received an initial tax benefit, which could be taken over a 5-year period, and an annual income stream. Upon their deaths, their Charitable Remainder Trust will create the Nancy and William Law Fund, a Restricted Fund, that will benefit a predetermined set of nonprofit organizations chosen by William and Nancy.

"The confidence we have in TFEC comes from its Board of Directors and the purpose of the organization in making a difference in the community."

- William and Nancy Law



Parents & Partners

Improving access to early childhood education



Objective

Parents & Partners is a special initiative of TFEC and an extension of Capital Beginnings, which provides support for the whole family, broadens community resources by giving children and their families the tools they need to be successful, and builds strong partnerships between the community, early learning providers, and the Harrisburg School District.

Parents & Partners addresses crucial economic and educational issues by providing early learning education in our community. The work done to increase school readiness, literacy and family engagement will have an immediate and positive impact on the lives of our children and families now and into the future. The Early Childhood Engagement Group, formerly the Dauphin County LEARN, guides the work of this partnership. Parents & Partners is a community collaborative committed to ensuring children enter kindergarten ready to learn and succeed.

Parents & Partners is made possible in-part by a grant from the Pennsylvania's Office of Child Development and Early Learning (or OCDEL) Race to the Top-Early Learning Challenge Grant. Please view page 18 for more information about Parents & Partners' funding partners.

For more information, to volunteer, make a monetary gift, or donate books/school supplies to Parents & Partners, please visit www.tfec.org/ParentsAndPartners.

Deliverables



Dauphin County School Readiness Calendar



"Welcome to Kindergarten" Books



Homework Toolkits



Family Fun Events



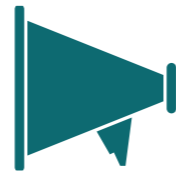
Transitioning to Kindergarten Programs



Business/Legislators Education Breakfast



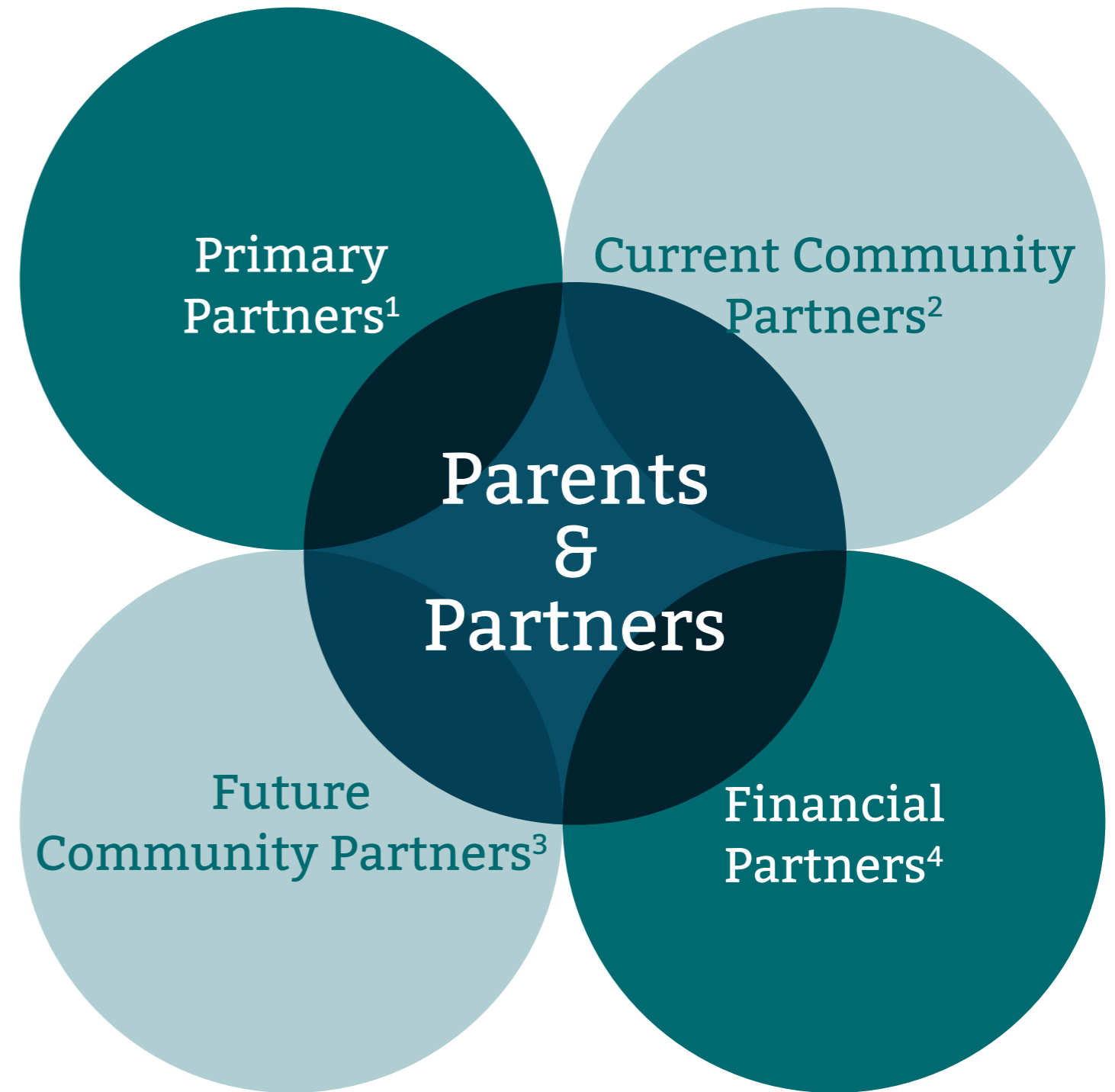
Training and Support



Community Outreach



Community Innovation Zone Grant Partners



1 - TFEC, Harrisburg School District, Capital Area Head Start

2 - Capital Region Literacy Council, Dauphin County Early Intervention, Dauphin County Library System, Hamilton Health Center, Harrisburg Regional Chamber of Commerce, Interfaith Shelter, Catholic Charities Diocese of Harrisburg, Temple

University NEST, Joshua Group, Pennsylvania Family Support Alliance, WITF

3 - Central PA Food Bank, Community Action Commission, Harrisburg SMILES, Nurse Family Partnership, PinnacleHealth, Pressley Ridge

4 - Pennsylvania's Office of Child Development and Early Learning Race

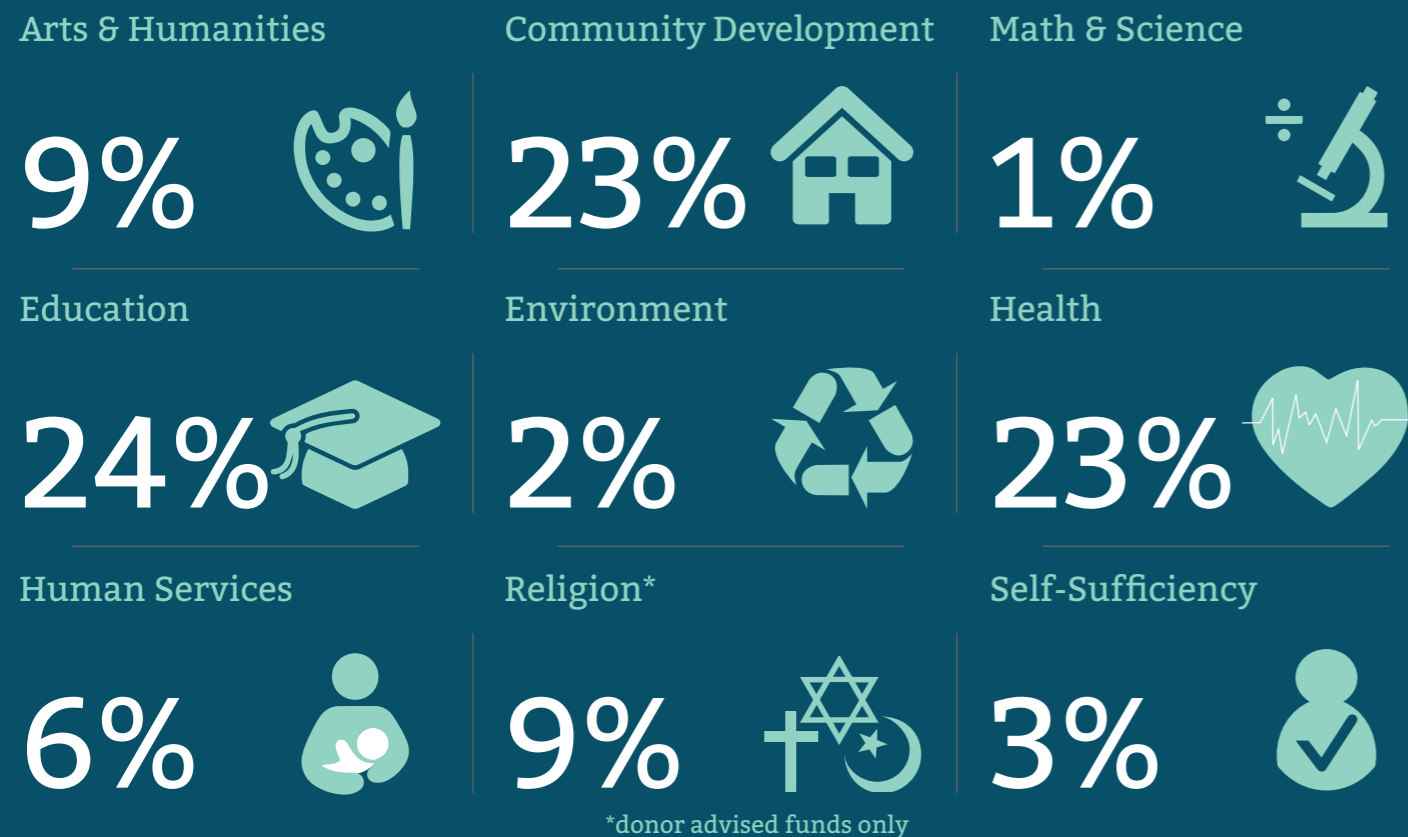
to the Top-Early Learning Challenge Grant, Greater Harrisburg Foundation, Harrisburg Public Schools Foundation, PNC Foundation, The Hershey Company, United Way of the Capital Region, Ms. Marilyn Abrams, Henry & Beatrice Miller Fund (Ms. Linda Miller & Mr. Rob Adelberg), Mr. William Lehr, Jr., Ms. Kristen Olewine Milke, Mr. Benjamin Olewine

2014 Total Grants

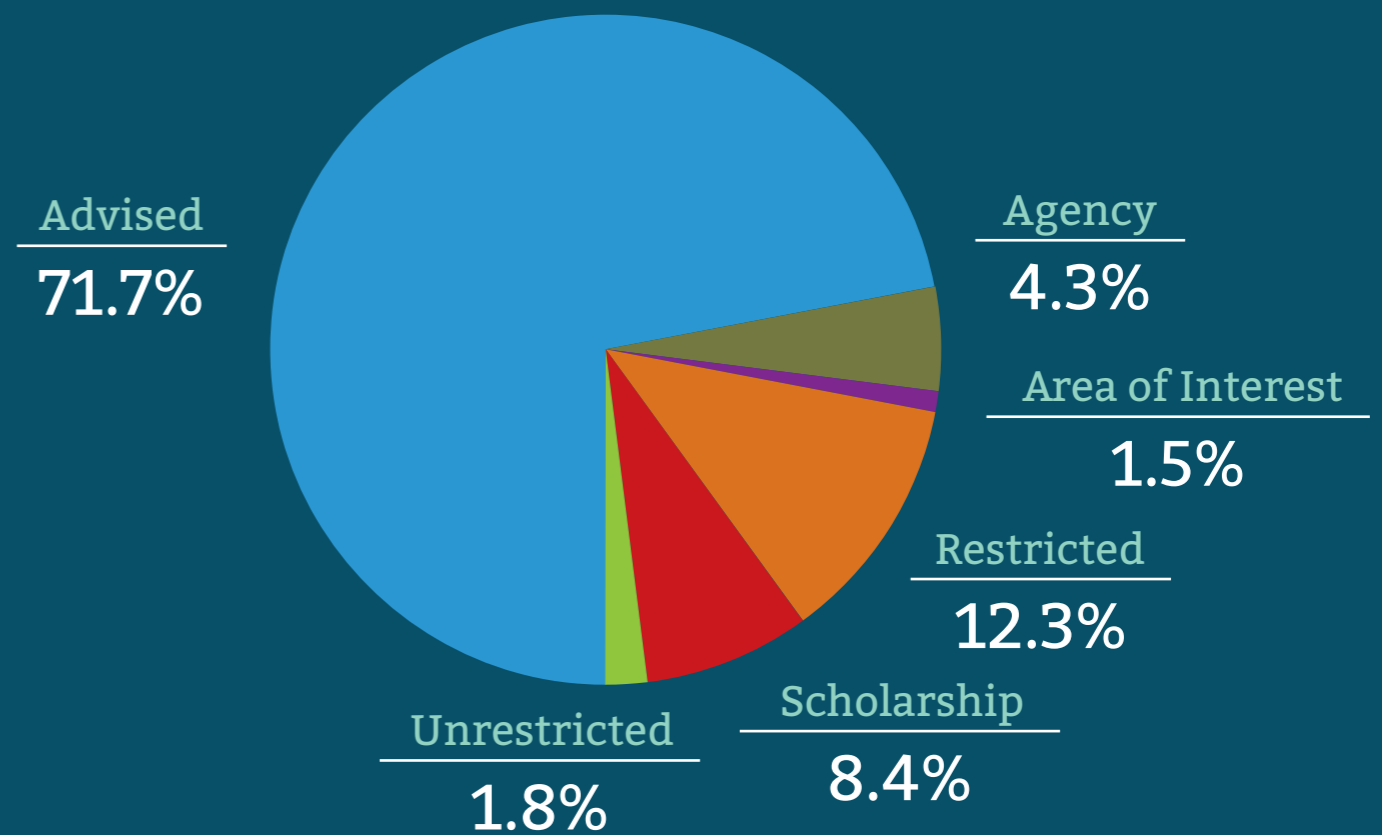
2014 Total Grants

\$5,360,851

2014 Total Grants by Program Area



2014 Total Grants by Fund Type



Greater Harrisburg Foundation

a Regional Foundation
Established 1920

Serving Cumberland, Dauphin, Franklin, Lebanon, and Perry Counties, and the Dillsburg Area

Grant Committee

Cynthia T. Tolsma ¹ , Chair	Linda A. Hicks
Marilynn Abrams	Renee Lieux
John Bolger [#]	David B. Skerpon ²
Dr. David Bronstein	Karen F. Snider
Barbara Darkes [*]	Kathy L. Pape, ex officio

* New in 2015
Term Expired in 2014
1 New Chair
2 Immediate Past Chair

2014 Total Assets
\$57,077,753
(76.56% of total TFEC assets)

2014 Total Grants
\$4,607,532
(85.95% of total TFEC grants)

Samara - The Center for Individual and Family Growth

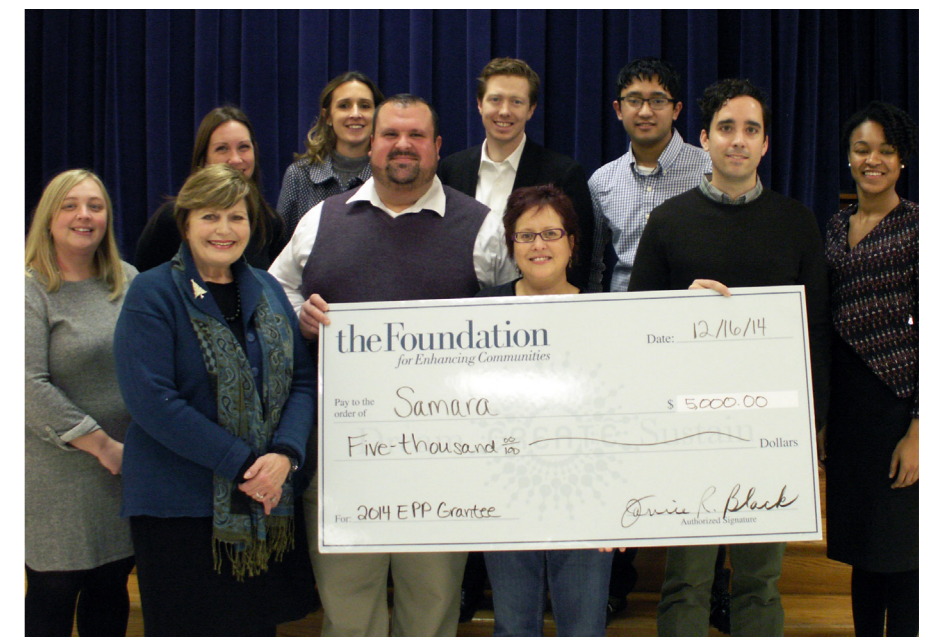
In 2014, Samara received a \$5,000 grant from the Emerging Philanthropist Program for their Intensive Parenting Program; the EPP funds were provided by the Greater Harrisburg Foundation.

The Intensive Parenting Program creates an environment of emotional safety and warmth that allows parents to reflect on their own experiences and open themselves to new ideas and unfamiliar concepts. This program encourages parents from high-risk families to experience positive and judgment-free interactions with activities that promote trust within the group and self-discovery. This gives parents who were traumatized and abused as children the opportunity to confront how those interactions in their childhood are influencing their parenting style. Parents are able to become open and aware of the needs of their children once their own needs for nurture and warmth become realized.



“Thanks to TFEC’s generous support of Samara, we are strengthened in our work to serve families caught in generational cycles of child abuse and neglect.”

- Pamela Haddad,
Executive Director



Mechanicsburg Area Foundation

a Regional Foundation
Established 1986

Serving the Mechanicsburg Area

Advisory Committee

Scott Christ, Interim Chair

Mark Basehore[#]

Leslie Collins^{*}

Mary Eberly

Tita Eberly¹

Donald Failor, CLU

Mike Greenawalt

Patti Herring

Parker Kuhns

Michael Malpezzi

Linda Mohler Humes

Elyse Rogers[#], Esq.

Alan T. Vandrew

Earnie Zimmerman

Kathy L. Pape, ex officio

* New in 2015

Term Expired in 2014

¹ Immediate Past Chair

Director Emeritus

Foster M. Berkheimer

David Coover

Charles E. Shields, Sr.

(posthumously)

2014 Total Assets

\$4,503,414

(6.04% of total TFEC assets)

2014 Total Grants

\$196,637

(3.67% of total TFEC grants)

Setebaid Services Inc.

In 2014, Setebaid Services received a \$4,000 grant from the Mechanicsburg Area Foundation for Camperships, tuition assistance for youth living with Type 1 Diabetes to attend diabetes education camp.

The camps are accredited by the American Camp Association and are in compliance with all position and public policy statements of the American Diabetes Association. The camps maintain the highest standards in the diabetes community for selecting staff, averaging a physician for every 15 campers. The camping season runs from July through August each summer. Type 1 Diabetes camps have been proven to improve diabetes management skills in youth living with Type 1 Diabetes. A 1993 study by the American Diabetes Association showed those with better management skills reduced or eliminated diabetes complications. The studies also showed those who benefit the most from Type 1 Diabetes camps are those who are least able to afford the camp.



“Because of camp, my daughter’s care has tremendously improved and she has learned to be her own advocate! She is more comfortable living with and talking about her diabetes.”

- Mother of camper Elizabeth



Franklin County Foundation

a Regional Foundation
Established 1987

Serving Franklin County

Advisory Committee

Dawn Keller, Chair
Harold Brake
Nancy Glen
Hank Guarriello
Lee Harter
Leroy S. Maxwell, Jr.
John McKenzie

Carolyn Miller
Gail Reeder
Charles G. Schlichter, Jr.
David Spang
Nancy Van Buskirk
Kathy L. Pape, ex officio

2014 Total Assets
\$8,019,044
(10.76% of total TFEC assets)

2014 Total Grants
\$331,481
(6.18% of total TFEC grants)

Arts Alliance of Greater Waynesboro Inc.

In 2014, the Arts Alliance of Greater Waynesboro received a \$750 grant from the Franklin County Foundation for the Performing Arts Fund to Support Destination ARTS!, an innovative program focusing on creating a vibrant arts community and supporting the revitalization of downtown Waynesboro.

Destination ARTS! currently supports one flagship gallery, an 18-artist co-op, a Ceramic Arts Center, an arts education center, two pop-up art galleries, art classes, children's activities, painting and drawing classes, student shows, a writers' group, and free public performances. Grant funds were used towards the public performances. Entertainment takes place in the galleries, on the sidewalks, and 'on the square', downtown Waynesboro's central location, several times per week year round.



“Thanks to FCF, the streets of Waynesboro are alive with activity and creativity: music, magicians, dance, arts demonstrations, and theater!”

- Kirsten Hubbard,
Board of Directors, Secretary



Perry County Community Foundation

a Regional Foundation
Established 1987

Serving Perry County

Advisory Committee

Thomas Cook, Chair
Nancy Bratton#
Merril Brofee
Anne Chappelka
Suzanne Dell#
Lenus A. Haines
Allen Hench*
Linda C. Kutz
George L. Lyter*, Jr.

Harriet Magee
L. Jeffrey Mattern*
Lori McClellan#
Lane Partner#
Marel Raub
John Zogby
Kathy L. Pape, ex officio

Honorary Members

Joan Holman^

Hon. William Moore

- * New in 2015
- # Term Expired in 2014
- ^ Deceased

2014 Total Assets

\$4,246,012

(5.69% of total TFEC assets)

2014 Total Grants

\$182,841

(3.41% of total TFEC grants)

Carroll Township Board of Supervisors

In 2014, Carroll Township received a \$1,000 grant from the Perry County Community Foundation towards the proposed expansion of the park at Valley Road. The park will be expanded to include a "Fitness Trail" (fitness stations for all ages located along a walking/hiking trail), natural landscaping to enhance green space and provide natural shading and rest-areas, completion of a foot-path for connectivity between fields and facilities, installation of benches made from recycled materials, and installation of two environmentally friendly pet-waste disposal systems. Grant funds will be used towards the installation of the fitness stations providing a safe, sustainable and fresh-air location for the community, enhancing livability in the Township and promoting a healthy lifestyle.



In 2005, the Carroll Township Board of Supervisors created a five-member Recreation Board empowered to supervise, regulate, equip and maintain township-funded recreation programs and facilities.



Camp Hill Community Foundation

a Regional Foundation
Established 1996

Serving the Camp Hill Area

Advisory Committee

Richard Woodard, Chair
Nancy Besch
Henry Cohen
Dennis Lebo*
Tom Johnston*

Barbara McLemore
David Reager
Hon. Mark Simpson#
Jill Williamson*
Kathy L. Pape, ex officio

* New in 2015

Term Expired in 2014

2014 Total Assets

\$665,502

(0.89% of total TFEC assets)

2014 Total Grants

\$41,360

(0.77% of total TFEC grants)

Junior Achievement of South Central PA

In 2014, the Camp Hill Community Foundation awarded Junior Achievement of South Central PA a \$1,500 grant for in-class programs serving the Camp Hill School District. The grant allows Junior Achievement of South Central PA to reach 15 classes containing 300 children in kindergarten to 5th grade with Junior Achievement financial literacy classes. Junior Achievement of South Central PA is a dynamic, growing organization with more than 2,500 volunteers and hundreds of corporate and individual sponsors. Junior Achievement of South Central PA covers six counties: Adams, Cumberland, Franklin, Perry, York, and the western half of Dauphin County. Junior Achievement of South Central PA's purpose is "to inspire and prepare young people to succeed in a global economy." In the 2013-2014 school year, Junior Achievement's financial literacy programs touched the lives of more than 41,000 students in South Central PA.



"I support both the method and goals of Junior Achievement because I see the benefits this program provides to my students."

- Christine A. Hatch, M.Ed.,
Eisenhower Elementary
School



Dillsburg Area Foundation

a Regional Foundation
Established 2004

Serving the Dillsburg Area

Advisory Committee

Jay Young, Chair

Mike Adams

Lee E. Eichelberger

Tom Gruber

Alan Kauffman

Larry Klase

Ronald Wenger

Kathy L. Pape, ex officio

2014 Total Assets

\$45,882

(0.06% of total TFEC assets)

2014 Total Grants

\$1,000

(0.02% of total TFEC grants)

Melvin J. and Alice Gayle Reeder Scholarship

Richard Settle is the Melvin J. and Alice Gayle Reeder Scholarship recipient for the 2014-2015 academic year.

Richard currently attends McDaniel College in Westminster, Maryland studying Physics and plans to earn a postgraduate degree in Mechanical Engineering. Richard chose to attend McDaniel College for its community atmosphere from academics to athletics, its small class size, and the personal and professional relationships.

Since McDaniel College is a private liberal arts college, the tuition is more expensive than a state-supported school. Being the 2014-2015 recipient of the Reeder Scholarship allowed Richard the opportunity to make college more affordable. Richard shares some similarities with the Reeder family by also coming from a large family of eight children containing two sets of twins. Richard attributes his life's successes and development, in part, to his family's love and support of him over the years.



“College is super important for me if I want to pursue my dreams of Mechanical Engineering; if it were not for the Reeder Scholarship, I don't think it would be possible.”

- Richard Settle,
Scholarship Recipient





2014 Champion of Philanthropy

Honoring Conrad “Connie” Siegel

“We were honored to host over 250 individuals in celebration of Connie, his philanthropic accomplishments, and his love of jazz.”

- Janice R. Black,
President and CEO

In May 2014, TFEC honored community leader, Conrad “Connie” Siegel, as our 2014 Champion of Philanthropy. Connie founded Conrad Siegel Actuaries (CSA) in 1963 after relocating to Harrisburg from Toronto, Canada. Connie’s expertise in group insurance and pensions helped grow CSA into one of Pennsylvania’s largest firms. CSA serves a wide range of employers, unions, joint boards and governmental agencies consulting on employee benefit plans. For the past 30 years, Connie has been very involved in the local community serving in various capacities for TFEC, Rotary Club of Harrisburg, Lebanon Valley College, and many other nonprofit organizations.

The 2014 Champion of Philanthropy raised \$50,000 to benefit the Fund for the Future, Connie’s chosen beneficiary. The Fund for the Future is an unrestricted fund originally established through the Warden Asphalt Company by John B. Warden, III. Unrestricted funds enable TFEC to respond quickly to changing community needs. Earnings from this fund provide grants to nonprofit organizations across the South Central PA counties of Cumberland, Dauphin, Franklin, Lebanon, and Perry, and the Dillsburg Area. These grants focus on areas such as arts and culture, community development, and education. Grant decisions are made by a volunteer advisory committee.

The 2014 Champion of Philanthropy raised \$50,000 to benefit the Fund for the Future, Connie’s chosen beneficiary.



William Lehr Jr., 2012 Champion of Philanthropy recipient, and Connie Siegel



L to R: Gail Siegel, Connie Siegel, Vicki Dolan and Bob Dolan

Statement of Financial Position

as of December 31, 2014 and 2013

Assets	2014	2013
Cash and Investments at Market Value	\$ 61,845,349	\$ 60,286,039
Receivables	1,706,003	1,882,043
Prepaid Expenses	24,559	22,201
Property and Equipment (Net)	9,188	4,928
Split Interest Agreements	10,972,508	10,564,320
Total Assets	\$ 74,557,607	\$ 72,759,531
Liabilities and Net Assets		
Accounts Payable	\$ 10,468	\$ 9,546
Deferred Revenue	—	2,180
Grants Payable	588,699	548,188
Liability to Resource Providers	4,859,979	4,498,315
Liabilities Under Split Interest Agreements	6,404,899	6,476,126
Total Liabilities	11,864,045	11,534,355
Unrestricted	55,161,874	54,196,260
Temporarily Restricted	7,531,688	7,028,916
Total Net Assets	62,693,562	61,225,176
Total Liabilities and Net Assets	\$ 74,557,607	\$ 72,759,531

Statement of Activities

as of December 31, 2014 and 2013

Support and Revenues	2014	2013
Contributions	\$ 4,832,471	\$ 5,140,188
Dividend and Interest Income	1,499,708	1,327,821
Net Gain (Loss) on Long-term Investments	2,384,891	9,705,730
Reimbursements and Other	931,922	1,371,885
Split Interest Agreements	34,601	3,538
Total Support and Revenues	\$ 9,683,593	\$ 17,549,162
Expenses		
Grants and Program Services	\$ 6,978,420	\$ 8,584,416
General, Administrative and Fundraising	1,236,787	1,047,945
Total Expenses	8,215,207	9,632,361
Change in Net Assets	1,468,386	7,916,801
Net Assets, January 1	61,225,176	53,308,375
Net Assets, December 31	\$ 62,693,562	\$ 61,225,176

Historical Investment Performance

Annual Investment Returns ¹			
Year	Model E ⁵	Model A ⁶	Model F ⁷
1996	19.6%	18.8%	—
1997	27.6%	22.0%	—
1998	23.4%	17.4%	—
1999	21.3%	16.3%	—
2000	-11.2%	-5.1%	—
2001	-8.8%	-4.2%	—
2002	-19.3%	-10.9%	—
2003	34.1%	24.2%	—
2004	16.0%	12.0%	1.6%
2005	8.6%	6.9%	1.1%
2006	19.0%	14.8%	4.7%
2007	4.3%	4.8%	6.1%
2008	-39.0%	-27.1%	0.1%
2009	31.1%	24.9%	8.4%
2010	18.5%	15.0%	6.4%
2011	-2.9%	-2.0%	3.7%
2012	16.7%	13.6%	5.7%
2013	32.0%	21.0%	-2.7%
2014	8.4%	5.9%	2.8%
Standard Deviation ²	19.3%	13.6%	3.3%

Average Annual Returns ¹ vs. Benchmarks ³						
Year	Model E ⁵	Benchmark	Model A ⁶	Benchmark	Model F ⁷	Benchmark
1 Year	8.4%	7.0%	5.9%	5.9%	2.8%	6.0%
3 Years	18.6%	17.9%	13.3%	13.2%	1.9%	2.7%
5 Years	14.0%	13.3%	10.4%	10.5%	3.1%	4.4%
10 Years	7.6%	7.0%	6.7%	6.6%	3.6%	4.7%
19 Years	8.6%	8.3%	7.9%	7.9%	—	—
Benchmarks	55% S&P 500, 25% Russell 2000, 20% MSCI-EAFE		34% S&P 500, 19% Russell 2000, 17% MSCI-EAFE, 30% BarCap US Aggregate Bond		100% BarCap US Aggregate Bond ⁴	

1 - Results are net of fees included in the mutual funds but before TFEC's fee for investment management and are as of 12/31/14.

2 - Standard deviation is a statistical measurement of the dispersion of investment returns over the 19-year period. Standard deviation does not indicate how investments actually performed, but merely indicates the volatility of their returns over time.

A higher standard deviation indicates a wider dispersion of past returns and thus greater historical volatility.

3 - Benchmark returns are unmanaged and do not incur fees. In 2004, the benchmarks were adjusted because small-cap and international allocations were increased. In 2003 and prior years, the Model E equity benchmark was 70% S&P 500, 20% Russell 2000 and 10% MSCI-EAFE, and Model

A's benchmark was 49%, 33%, and 7%, respectively.

4 - To minimize market fluctuations, the fixed income component is invested in short- and medium-term funds, while the benchmark includes some longer-term bonds.

5 - 100% Equities

6 - 70% Equities & 30% Fixed Income

7 - 100% Fixed Income

Investing with TFEC

Robert Dolan, Investment Advisory Committee Chair



“We have maintained our investment philosophy!”

The past year has been a good year for investors in the U.S., the Dow Jones Index Fund was up by almost 10% for the year and the S&P 500 Index Fund was up more than 13%. The bond market remains strong, as interest rates of all durations remain at historically low levels. The international equity markets and domestic small caps have not fared as well; you can see the net effect in our Model E investment results on page 36 of the Annual Report.

With all that considered, our disciplined approach to passive investing has served us well. We continue to rebalance as cash becomes available, which has the effect of continuing to “buy low and sell high” as we keep our

assets properly diversified. We have maintained our investment philosophy! During the year we sold our entire stake in PIMCO in steps as a result of the management turmoil there. We have redeployed those assets into high quality and intermediate term bonds, keeping with our fixed income strategy.

If you would like to receive quarterly updates about TFEC’s investment performance and a message from the Investment Advisory Committee, please be sure to sign up online at www.tfec.org for any of the three Insider newsletters: Professional Advisor Insider, Donor Insider, or Community Insider (geared towards nonprofit organizations).

TFEC’s Assets as of December 31, 2014

Total Assets	\$74,557,607	100%
Committee Advised Funds	6,557,025	8.79%
Donor Advised Funds	14,295,503	19.17%
Advised Total Assets	20,852,528	27.97%
Agency Funds	6,453,255	8.66%
Area of Interest Funds	4,617,250	6.19%
Projects	1,960,472	2.63%
Restricted Funds	14,568,483	19.54%
Scholarship Funds	8,833,475	11.85%
Split Interest Agreements (Trusts)	11,597,020	15.55%
Unrestricted Funds	5,597,646	7.51%
Other Assets	77,478	0.10%

Total Return Policy

1996

Since 1996, TFEC has invested its assets according to “Total Return”. A total return policy treats all returns on investments – interest, dividends, realized and unrealized capital appreciation – as additions to principal. This spending policy allows for more predictable distributions over the long-term, and ongoing grant recipients are able to rely upon a relatively stable income stream.

Investment Strategy

19+ yrs

In 1996, TFEC adopted a disciplined, passive investment strategy which suggests that we not try to outperform the market in any given year. In order to realize market returns and maintain diversification at the lowest possible cost, TFEC invests in no-load, low-expense mutual funds. These funds, from reputable companies such as Vanguard and Dimensional Fund Advisors, are held within separate asset-class pools.

Investment Models

4

TFEC has four different models you can choose from to invest your fund: Model E, Model F, Model A and Model M.

- Model E: 100% Equities
- Model F: 100% Fixed Income
- Model A: 70% Equities & 30% Fixed Income
- Model M: 50% Money Market & 50% Very Short-Term Corporate Notes

Passive v. Active Management

S&P 500

S&P 500 index funds, a passive investment index, have outperformed 80% of the managed general equity mutual funds over the past twenty years. Similarly, the mid-cap and small-cap index funds have outperformed actively managed funds of similar investment guidelines. Part of this performance is due to lower fees charged against indexed funds, low commissions paid on security transactions, and little asset turnover.

Average Annual Returns v. Benchmarks

1 year

Results are net of fees included in the mutual funds but before TFEC’s fee for investment management and are as of 12/31/14.

- Model E: 8.4%; Benchmark: 7.0%
- Model A: 5.9%; Benchmark: 5.9%
- Model F: 2.8%; Benchmark: 6.0%

Please see page 36 for the complete list of investment performance.

Investment Flexibility

4

When you establish a fund, you can select a fund investment mix among four investment models. Each model is structured to have a different performance benchmark and volatility measure. For example, you can choose to invest your fund in Model E, Model F, Model A or Model M. You can divide your fund’s assets in any proportion among these four models.

New Funds

Established in 2014

Agency Funds

- **Mt. Gretna School of Art Fund:** This fund helps to strengthen and sustain the Mt. Gretna School of Art’s mission to provide a top quality art curriculum that significantly advances the skills and knowledge of talented and motivated students and, concurrently, enhances the cultural and educational programming of the community.
- **Sexual Assault Resource Center:** This fund was created to support the Sexual Assault Resource and Counseling Center’s mission of educating the community in primary prevention skills to end sexual violence.
- **St. Paul’s Lutheran Church Fund #2:** This fund was established to support the church’s local and worldwide mission as well as provide scholarships to individuals.
- **St. Paul’s Lutheran Church Fund #3:** This fund was established to support church operations.

Committee Advised Funds

- **Emerging Philanthropists Fund:** The Emerging Philanthropists Fund was created in 2014 by the inaugural class of the Emerging Philanthropists Program (EPP). EPP is a partnership between The Foundation for Enhancing Communities and the Harrisburg Young Professionals and was established to engage and educate Harrisburg’s emerging business and community leaders to develop a deep understanding of the needs of the community and the benefits of philanthropy.
- **Maple Hill Fund:** The Maple Hill Fund, established by Vermont residents Linda Miller (a native of Harrisburg) and Rob Adelberg, contributes to nonprofit organizations addressing problems of economic and social inequity, promoting positive futures for undervalued and disadvantaged individuals, protecting the welfare of animals, preserving areas of undeveloped natural landscape, and supporting the improvement of the health and well-being of persons in sudden and ongoing distress in the underdeveloped world.

Donor Advised Funds

- **Form Foundation Fund:** In the process of taking materials and forming them into works of art, the artist is also transformed. The Form Foundation Fund is dedicated to providing the resources needed to share this inspirational practice with others. Their mission is to expand access to three-dimensional art and share the skills required to make three-dimensional art in the workshop environment where collaborative practice is used by artists to teach, learn and inspire.
- **McLemore Family Fund:** This fund was established to support various nonprofit organizations of the donor family’s choice.

Restricted Funds

- **Adiv Vivek Lift Soccer Award:** This fund was established in memory of Adiv to honor his spirit and love for soccer, and recognize those who reflect his values of good sportsmanship and teamwork in a positive environment. Through soccer, he would take the opportunity to bring kids together and overlook their differences. The award will be presented annually to one selected college bound soccer player from East Pennsboro High School.
- **Bill Lehr Fund for the Arts #2:** This fund was established to annually benefit a predetermined list of arts and culture nonprofit organizations in the Greater Harrisburg Area.
- **Rebecca Engle Memorial Fund:** This fund was established to raise brain cancer awareness and to provide awards to select graduating seniors of Central Dauphin High School in Rebecca’s name. Awards will be given to students who exhibit the attributes and characteristics that defined Rebecca: inspire others, offer encouragement, and have a true desire to help people in all aspects of life.

Mary C. Eberly Fund

When I was asked to be an Advisory Committee member of the Mechanicsburg Area Foundation, I was honored because I knew many of the current and past members and the positive change that the Mechanicsburg Area Foundation was creating in our local community. I created the Mary C. Eberly Fund to help the annual grantmaking efforts of the Mechanicsburg Area Foundation. I chose an unrestricted fund because I wanted the Advisory Committee to decide each year where the funds were most needed in the community.



“I wanted my funds to be unrestricted so they can be used where the funds are needed the most in the community.”

- Mary C. Eberly



New Projects

Established in 2014

TFEC manages projects that provide charitable benefits for the community; because TFEC is the project's fiscal sponsor, gifts to a project are tax-deductible.

Through a project agreement, TFEC can pay for eligible expenses related to the project's goals and the net proceeds can be used to create a charitable fund at TFEC or be distributed to another nonprofit organization. TFEC provides objective fiscal oversight and expertise in order to ensure legal and accounting compliance. TFEC

manages over 60 projects totaling \$2 million in assets (12/31/14). Grants, totaling \$503,430, were made in 2014 from these projects to various nonprofit organizations such as Penn State Hershey Children's Hospital, Four Diamonds Fund, and Domestic Violence Services of Cumberland & Perry Counties.

- **Alpaca Fiber Designs:** The project provides an integrated customized employment setting to enhance the lives of persons with disabilities and empower individuals to achieve vocational independence and be contributing members of their communities.
- **Capitol Area Forerunners:** The leaders of the project will provide guidance, encouragement and build a helpful relationship between the coach and the athlete that will foster an atmosphere for athletic and personal growth.
- **Chester County Cheese Artisans:** The charitable purpose of the project is to provide educational opportunities for farmstead and artisanal cheese makers to improve their cheese making skills, increase production, and provide informational opportunities for consumers to learn about the nutritional and economic benefits of buying local cheese.
- **City Hall Beautiful Committee:** The project will solicit funds from private donors to repair, improve and beautify the Dr. Martin Luther King, Jr. Government Center and the Public Safety building.
- **Conley Cushing's Disease Fund:** The project raises money to provide support to nonprofit organizations, foundations or centers that have a direct or indirect focus on Cushing's Disease.
- **Downtown Hershey Association:** The purpose of the project is to respect and preserve the unique heritage bequeathed by Milton S. Hershey through revitalizing Hershey's downtown community.
- **Earl S. Punchard CHOP Invitational:** The project will host a golf tournament to support research at the Oncology Department of the Children's Hospital of Philadelphia.
- **Farmers Market in Hershey & Summer Concert Series:** The purpose of the project is to assist the Farmers Market in Hershey & Summer Concert Series in making a significant contribution to the long-term health of the region by providing a mix of healthy lifestyle opportunities in the Hershey area.
- **Gray for Becca:** The project supports the Rebecca Engle Memorial Fund, and makes awards in Becca's memory to Central Dauphin High School, the Hershey Jr. Bears youth ice hockey program, and various brain cancer research efforts.
- **Jenkins Strength:** The charitable purpose of the project is to provide public high schools in Dauphin County with donations to purchase, upgrade and/or replace strength training equipment to be used by their students. The grants will be given to the schools in memory of Michael Jenkins.

- **John R. Fenstermacher Memorial Golf Tournament:** The project will support research at Penn State Hershey through the John R. Fenstermacher Head and Neck Cancer Research Endowment.
- **Make a Mark for Mark:** The project provides education and resources to break down the stigma surrounding depression, mental illness and suicide.
- **Operation Give Back:** The project will provide aid, financial assistance, and support to individuals with injuries, disabilities and other impairments. Grants will be made to organizations such as PA Veterans Foundation, Autism Speaks, and first responder departments located in Lebanon/Dauphin Counties.
- **PA United Cricket Association:** The project will educate the public about the benefits of Cricket and train young people to enjoy the game and increase their physical activity.
- **Pennsylvania Women's Forum:** The purpose of the Forum is to provide nonpartisan analysis and research through a quarterly luncheon series that features a panel of experts who will examine broad social and economic problems and solutions to public policy challenges facing PA women and families.
- **Springhill Center for Recreation and Education:** The purpose of the project is to provide Bradford County and the surrounding communities with affordable outdoor recreational and educational experiences.

Linglestown 250th Anniversary

The purpose of this project is for the development and beautification of the Village of Linglestown as well as education regarding Linglestown's diverse and unique history. In 1765, Thomas Lingle purchased a large tract of land and divided it into 80 plots to establish the Village of St. Thomas. Today that area is known as the Village of Linglestown. Together, its community will celebrate the 250th Anniversary of Linglestown in 2015.



"I have enjoyed working with TFEC; they have given me the guidance and support to accomplish our huge community event."

- Polly Murphy, Co-Chair



Management Service Agreements

For foundations and nonprofit organizations

TFEC provides an array of services for nonprofit organizations or private foundations.

Through this contractual relationship, a personalized package including options from accounting services to investment management is created, providing

efficient financial administration. TFEC currently administers 17 management services agreements, with assets totaling \$36.9 million (12/31/14).

Harrisburg Academy Foundation

This year marks the 10th year of TFEC's management of all endowed resources of the Harrisburg Academy Foundation. The Harrisburg Academy Foundation has fiduciary responsibility for the endowment of Harrisburg Academy. During the past 10 years, Harrisburg Academy Foundation's endowment has nearly doubled. The endowment serves as a source of non-tuition revenue to supplement enrollment tuition paid by the families of all students. The Academy's endowment funds student scholarships, educational programs for students in preschool through 12th grade, faculty salaries, and events.



Harrisburg Academy is the area's only independent school and the 17th oldest non-public school in the nation. Their coed, diverse school community inspires students from age three through 12th grade by providing an academically challenging and globally minded liberal arts education focused on dynamic classroom experiences, strong student outcomes, and a commitment to character development. Currently, their student body draws from 27 school districts and 6 counties in the midstate. Harrisburg Academy's current Head of School is Dr. Jim Newman.



"Our ten-year experience with TFEC has been successful and quite beneficial to the operation of the Academy."

- Seth Mendelsohn, President,
Harrisburg Academy Foundation



2015 Board of Directors



Standing (left to right):

Spencer G. Nauman, Jr., Esq.
Dr. Carolyn Dumaresq, Asst. Secretary
Barbara A. Darkes, Esq.
Glenn P. Heisey
Nancy J. Glen
Marilynn Abrams

Cynthia T. Tolsma

Seated (left to right):

Karen F. Snider
L. Jeffrey Mattern, Vice Chair
Kathy L. Pape, Chair
David A. Schankweiler
Michael R. Gillespie

Not Pictured:

Cate Barron
Steven M. Hoffman, CPA, Treasurer
Dolly M. Lalvani, Asst. Treasurer
Neal S. West, Esq. Secretary

Director Emeriti

John M. Aichele*
William H. Alexander
Tita Eberly
Gerald L. Hempt
Ellen Brody Hughes
Raymond L. Gover
Lois Lehrman Grass

William Lehr, Jr.
Jacqueline Little
Harold A.B. McInnes
Claude E. Nichols, M.D.*
John S. Oylar, Esq.
Velma A. Redmond
John M. Schrantz

John McD. Sharpe, Jr., Esq.
Conrad M. Siegel
Elsie W. Swenson*
Mary A. Simmonds, M.D.
Nathan H. Waters, Jr., Esq.
Jonathan Vipond, III, Esq.
Mary Webber Weston

*Deceased

2015 Standing Committees

Asset Development Committee

Kenneth E. Lehman, Chair
James D. Cameron
Nancy J. Glen

Bob Haigh
L. Jeffrey Mattern
Mike Murtha

David W. Sweet
Jonathan Williams, CFA, CPA

Audit Committee

Michael R. Gillespie, Chair
Dolly M. Lalvani

William Lehr, Jr.
Kenneth E. Lehman

Anthony L. White

Communications Committee

David A. Schankweiler, Chair	Bob Hostetter	Jeffrey Ritchie, Ph.D.
Lynn Burkholder	Nicholas D. Hughes	Morton Spector

Finance and Administration Committee

Steven M. Hoffman, CPA, Chair	David M. Kleppinger, Esq.	David A. Schankweiler
Dorothea Aronson	Dolly M. Lalvani	Cynthia T. Tolsma
Robert J. Dolan	L. Jeffrey Mattern	

Human Resources Committee

Kathy L. Pape, Chair	Dr. Steve C. MacDonald	David A. Schankweiler
David M. Kleppinger, Esq.	Velma A. Redmond, Esq.	

Investment Advisory Committee

Robert J. Dolan, Chair	Howard Hamann	Peter J. Ressler, Esq.
Robert E. Caplan, CFA	Glenn P. Heisey	Conrad M. Siegel
Joy B. Dougherty	Kenneth E. Lehman	Jonathan Vipond, III, Esq.
Frederick D. Fischer	William Lehr, Jr.	Jonathan Williams, CFA, CPA

Nominating Committee

David M. Kleppinger, Esq., Chair	David A. Schankweiler	Jonathan Vipond, III, Esq.
Velma A. Redmond, Esq.		

Professional Advisors Council

Spencer G. Nauman, Jr., Esq., Chair	Donald M. Healey	Peter J. Ressler, Esq.
Robert E. Caplan, CFA	Steven M. Hoffman, CPA	Elyse E. Rogers, Esq.
Robert R. Church, Esq.	Richard K. Hoskinson, Esq.	Kevin M. Scott, Esq.
Michael B. Devlin, CPA	Robert J. Langan, CFS, CSA	Stanley A. Smith, Esq.
Donald E. Failor, CLU	LeRoy (Tucker) S. Maxwell Jr., Esq.	Richard W. Stevenson, Esq.
Frederick D. Fischer	Elizabeth P. Mullaugh, Esq.	Vicky Ann Trimmer, Esq.

TFEC Properties Real Estate Holding Company Advisory Committee

Neal S. West, Esq., Chair	Mark D. Hipp, Esq.	George A. Parmer
Bernie Campanella	Allen E. Hench	Peter J. Ressler, Esq.
J. Stephen Feinour, Esq.	Randall G. Hurst, Esq.	Kevin M. Scott, Esq.
Robert C. Grubic	Elizabeth P. Mullaugh, Esq.	Lane Schultz

Kathy L. Pape, TFEC Board of Directors Chair, serves as ex officio on all committees.

2015 TFEC Staff and Consultants



Staff

Front Row (left to right):

Jennifer Doyle, Director of Development & Community Investment

Allison Moesta, Program Officer for Educational Enhancement

James Kroll Lloyd, Communications Officer

Janice R. Black, President and CEO

Jeanne Predmore, Project Manager, Capital Beginnings

Kirk Demyan, Chief Financial Officer

Back Row (left to right):

Mark Bradshaw, Administrative Assistant

Jim Martin, Senior Financial Advisor

Chera Yankowski, Executive Assistant

Deb Fulham-Winston, Asset Development & Project Officer

Brandon Tressler, Financial Services Associate

Jennifer Kuntch, Program Officer for Community Investment

Not Pictured:

Leslie Fick, Program Manager, Parents & Partners

Consultants

Brian Hess, The ENVISION Group, Inc., Print Support

Spencer G. Nauman, Jr., Esq., Nauman, Smith, Shissler & Hall, LLP, General Counsel

Conrad M. Siegel, Conrad Siegel Actuaries, Consulting Actuary and Founder

Maher Duessel, Auditor

FGV Media, Website Support

Pipeline Interactive, Website Support

IntermixIT, IT Support

For a complete listing of all funds, please visit our website at www.tfec.org.

Dream **CREATE** Sustain

Learn more at www.tfec.org.

the Foundation
for Enhancing Communities